

Double Arbor

It's time to endure

Crafted excellence.

Defined by the next generation.

Introducing Micor's new double arbor blade – a breakthrough the market didn't see coming but won't want to be without. Engineered to outperform, built to dominate, and designed to maximize productivity, it sets a new standard in its class.

With Micor's double arbor blade, you get nothing but the finest raw materials available – combined with meticulously engineered geometry for uncompromising performance in the toughest environments.



Improved brazing

Improved fastening technology for saw blade cutting edges. This enables high feed speeds during toughest conditions.

Upgraded method

Upgraded attachment method and technology of wipers for increased durability.

New body

New material developed for this type of blade in consultation with the material supplier. This together with Micor's heat treatment guarantees a tough and stable body.

Milled bore

Smooth centre bore with tight tolerances for a hassle free posting process.

New design for optimized saw dust removal



Optimized wipers



Optimized strobes



Better collection and removal of sawdust. Cleaner cut. Less risk of burning.



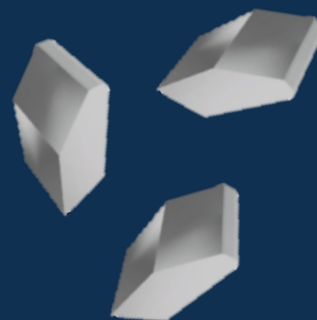
**A new tooth –
A refined chemical
composition**

**Carefully selected
tooth material for
toughest challenges**

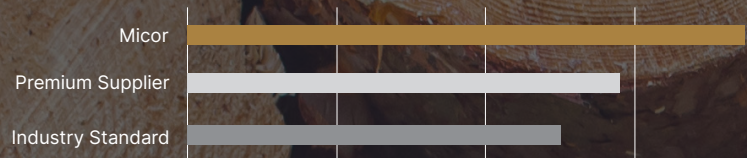
Together with suppliers the best tooth selection for winter and **challenging environments** has been developed. This allow for faster running **speed** in the sawmill and longer **durability**.



WC
Tungsten Carbide



More than **30% longer** running time than the second-best manufacturer and close to **50% more** than industry standard.



Result based on multiple tests, conducted on a HewSaw R200, under Nordic conditions.

VERIFIED BY
LOGGMÅSTER

Results and conclusions

01

Durable tool

Optimized geometry together with updated material allow for increased durability.

02

Production economy

Longer running time allow for less operational disturbance equaling fewer postings. Resulting in positive production economy.

03

Safer workplace

Few postings and longer running hours, together, allow for a better work environment and reduce risk of injuries related to postings.

Durability / Tool life

+50%

Compared to industry standard.
Verified by Loggmaster.

Productivity increase

~10,5%

per cycle

Calculated by Effekt.

Safer workplace

